

ZONA[®]

Hobby Tool Catalog



For Miniatures,
Model Making,
Assembly Projects
in wood, metal,
and plastic



Razor Saws

A Ultra Thin Kerf Razor Saws 35-050, 35-150, 35-200

The thinnest razor saws available with blades that are only .008" thick. Ideal for making super fine cuts in wood, soft metals and plastic without causing splitting or ragged edges. Ultra Thin Kerf Razor Saws also have shorter cutting depths (7/16") with steel backs for added blade stability. Ultra Thin Kerf saws cut on the **pull** stroke.

B Fine Kerf Universal Razor Saws 35-550, 35-500, 35-520, 35-560

Good all purpose saws for modeling and woodworking. They cut balsa and other wood, plastic, copper and brass, while leaving smooth edges. The 1 3/16" cutting depth is suitable for cutting most shapes and thicknesses. These saws cut on the **pull** stroke.

The **35-560 Deluxe Handle Razor Saw** has the same great blade as the 35-550 with a more substantial handle. This saw was featured in the June, 2007 issue of *Popular Woodworking* and highly praised for the clean finish it produced "it shone like it had been planed", versatility "great for detail work...and to cut

dowels, define the limits of hinge mortise and rip wedges before driving them into a joint.", its affordable price "the Best \$9 Backsaw", and for being "made in Bethel, CT".

C Medium Kerf Razor Saws 35-300, 35-400

The Woodcraft Saw is excellent for cutting hard and soft wood. It is also perfect for making small picture frames, shadow boxes, doll house parts, and fine dovetails in cabinetry work. This saw cuts on the **pull** stroke.

The Flush Cutting Saw has a flexible blade and teeth with no set for cutting dowels, pegs, and plugs flush without marring surfaces. It can also be used for cutting tenons and excess trim in joinery and hard to reach spots. This saw cuts on the **pull** stroke.

D Thick Kerf Razor Saws 35-350, 35-380

Woodcraft and Dovetail Saws are excellent for many wood cutting applications, including carpentry, dovetailing and other joints & trim cuts. The Woodcraft Saw cuts on the **pull** stroke, and the Dovetail Saw cuts on the **push** stroke.

Zona: The Best \$9 Backsaw

Some saws do a lot of things, some are good at one thing, and some are just plain good. And in the case of this Zona backsaw, it's a little bit of everything.

The Zona is a 14 1/2" long backsaw with a 10 1/2" long blade, 1 1/2" cutting depth of cut, and a straight handle with a steel back. The medium sized rip saw is the pull stroke. It's a little bit of everything. The saw costs only \$9.95 in our store. It's a great value.

Designed for model making, the saw cuts slowly, which lets the operator have the surface finish he wants and also clean the cut. It's not like a hand plane. And when you're done, the work is like it had been planed. The saw is a little bit of everything. It's a little bit of everything. It's a little bit of everything.

The Zona is a great saw for detail work, such as carving, modeling, and sanding. It's also a great saw for cutting dovetails. It's a little bit of everything. It's a little bit of everything. It's a little bit of everything.

SPECIFICATIONS
 Zona Backsaw
 Steel price: \$14
 Overall length: 14"
 Blade length: 10 1/2"
 Cutting depth: 1 1/2"
 Price range: \$9.95
 Zone Tools, 201 750 8421 or zone@zone.com

zone tools in Bethel, CT. So when you see the saw, you'll see what you pay for.

— Christopher Schwarz
 Zone Tools, Inc. is a 501(c)(3) non-profit.





Razor Saw Pricing & Blade Specifications

Part No.	Price	Razor Saw Description	TPI	Blade		
				Thickness/Kerf	Length	Depth
35-050	\$5.50	Ultra Thin Kerf	52	.008"	4½"	7/16"
35-150	5.50	Ultra Thin Kerf	42	.008"	4½"	7/16"
35-200	5.50	Ultra Thin Kerf	32	.008"	4½"	7/16"
35-550	\$6.50	Fine Kerf	42	.010"	6½"	1¾"
35-500	6.50	Fine Kerf	32	.010"	6½"	1¾"
35-520	6.50	Fine Kerf	24	.010"	6½"	1¾"
35-560	9.90	Deluxe Fine Kerf	24	.010"	6½"	1¾"
35-300	\$6.50	Medium Kerf Woodcraft	24	.015"	6½"	7/8"
35-400	9.50	Medium Kerf Flush Cut	16	.012"	6½"	1¼"
35-350	\$8.90	Thick Kerf Woodcraft	14	.020"	6½"	1¾"
35-380	9.50	Thick Kerf Dovetail	18	.020"	8"	1¾"

TPI



The more teeth per inch (tpi), the finer the cut. For example, blades with 42 tpi leave a smoother finish than those with 24 tpi.

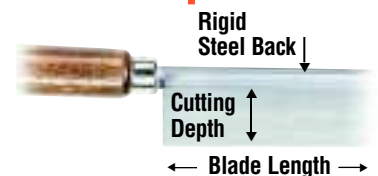
Kerf

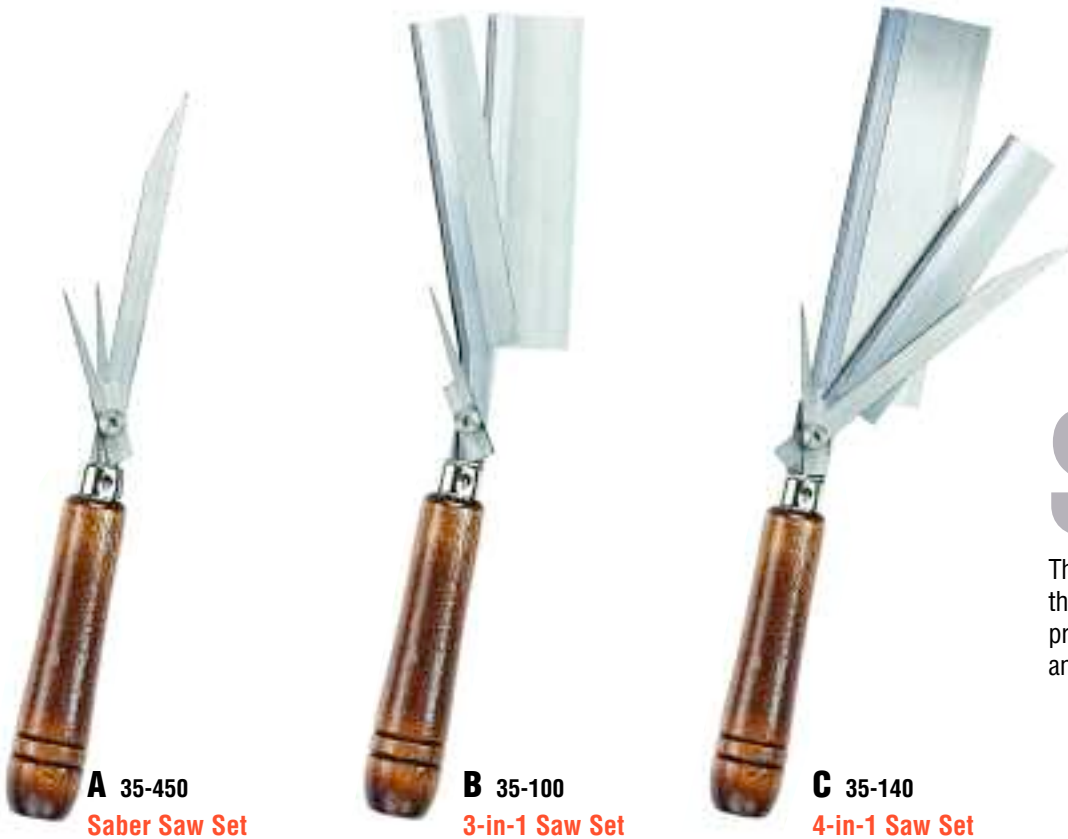


Relates to blade thickness or the size of the slot made by the blade in parting the material. Zona saws are available in 4 kerf sizes—

- .008" Ultra Thin Kerf
- .010" Fine Kerf
- .012-.015" Medium Kerf
- .020" Thick Kerf

Length & Depth





Sets

These versatile Saw Sets have the **only** blades in the Zona program that are removable and interchangeable.

A 35-450
Saber Saw Set

B 35-100
3-in-1 Saw Set

C 35-140
4-in-1 Saw Set

A Saber Saw Set 35-450 \$6.90

This set comes with three interchangeable blades (36-458, 36-408, 36-406) that are removable and attach with a knurled nut. The long flexible blade is ideal for large inside cuts and for cutting through thick material including styrofoam. Two small keyhole blades, with push and pull style teeth, are used for trimming and making shorter cuts.

B 3-in-1 Saw Set 35-100 \$7.90

This general purpose set comes with three interchangeable blades (36-119, 36-129, 36-408) that are removable and attach with a knurled nut.

C 4-in-1 Saw Set 35-140 \$8.90

This versatile set features 4 different saber and razor saw style interchangeable blades (36-555, 36-050, 36-458, 36-408). The blades are removable and attach with a knurled nut. The 4-in-1 offers the best value with an extra blade (long saber) and a larger razor saw blade.

Replacement Blades

PRICING & SPECS

These interchangeable blades can be used as replacements or additions to any set on this page

Part No.	Price Per Quantity	Saw Blade Description	Comes in Set			TPI	Kerf	Length	Depth
			A	B	C				
36-050	\$1.60 ea	Ultra Thin			✓	52	.008"	4½"	7/16"
36-119	1.60 ea	Ultra Thin		✓		32	.008"	4½"	½"
36-129	1.60 ea	Medium		✓		24	.015"	4½"	7/8"
36-406	2.10/3pk	Keyhole Saber (pull)	✓			24	.022"	2¼"	n/a
36-408	2.10/3pk	Keyhole Saber (push)	✓	✓	✓	24	.022"	2¼"	n/a
36-458	.95 ea	Large Saber	✓		✓	24	.022"	4½"	n/a
36-555	1.60 ea	Fine Saw			✓	32	.010"	5½"	1¾"

Miter Boxes



A 35-260
Wide Slot



B 35-250
Mini



C 37-240
Thin Slot

Miter Box Pricing & Specifications

	Part No.	Miter Box Price	Slot Description	Slot Size	Cutting Angles	Cutting Depth	Overall Width	Length
A	35-260	9.90	Wide Slot	.031"	45°, 90°	3/4"	1¾"	5½"
B	35-250	4.95	Mini Miter	.012"	30°, 45°, 90°	1/4"	1½"	6½"
C	37-240	14.90	Thin Slot	.014"	30°, 45°, 90°	7/8"	2"	6½"



A Wide Slot Miter Box (.031")

Silver color aluminum miter box (35-260) with wide slots that accommodate any blade including junior hack saws. This model is one inch smaller than the 35-250 and 37-240 miter boxes.

35-260 \$9.90 Miter Box



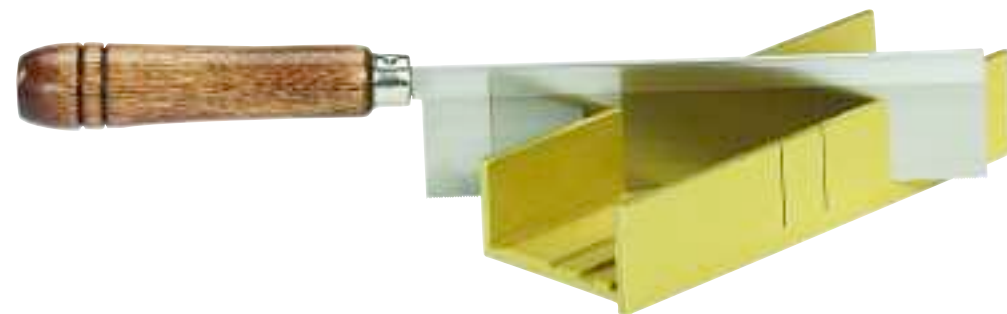
B Mini Miter Box and Saw Set

Plastic molded miter box for use with ultra thin kerf 35-050, 35-150 and 35-200 saws to cut square ends, perfect splices and mitered corners. Has adjustable stop and beveled channel for tubing and dowels.

35-250 \$4.95 Miter Box

35-251 8.95 Miter Box Set
with 35-200 ultra thin saw (32tpi)

Sets



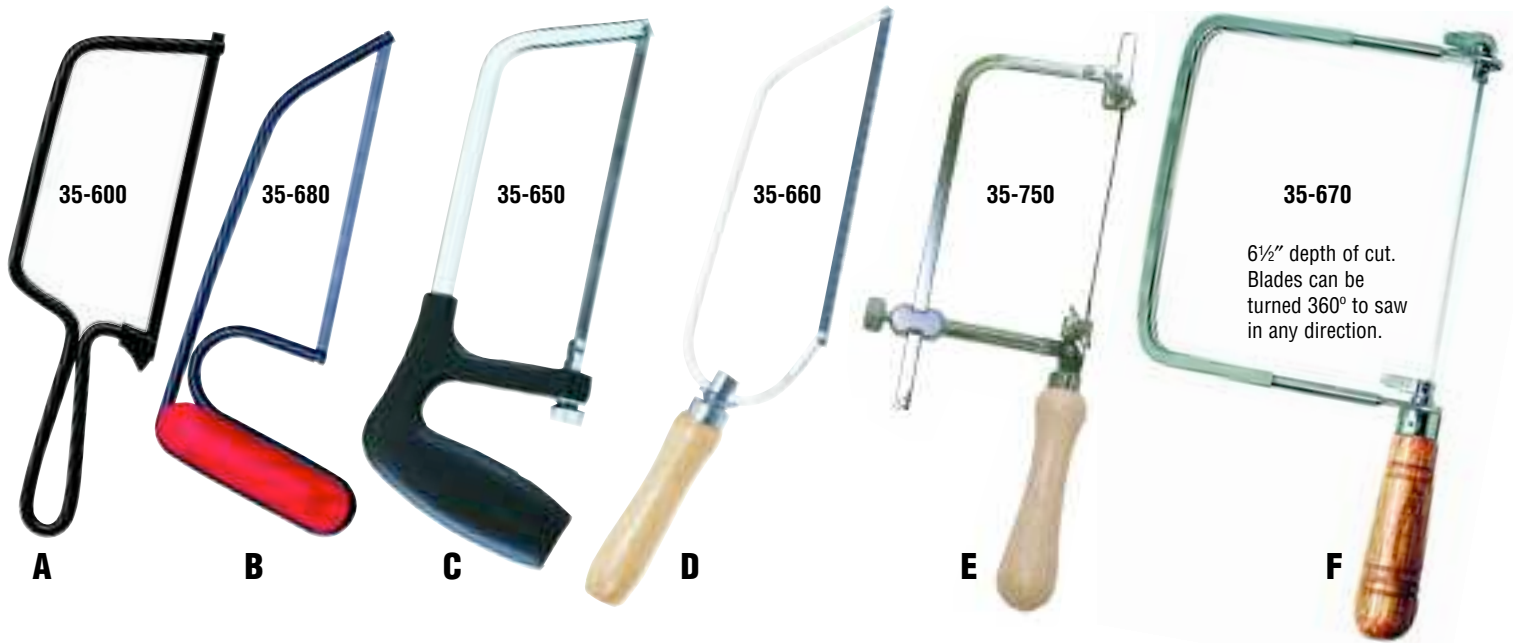
C Thin Slot Miter Box (.014") and Saw Sets

Gold color aluminum miter box has unique narrow slots to maintain very accurate cuts with fine kerf saws 35-500, 35-550, 35-520, 35-560.

37-240 \$14.90 Miter Box

35-231 19.50 Miter Box Set
with 35-520 fine kerf saw (24tpi)

35-241 19.50 Miter Box Set
with 35-550 fine kerf saw (42tpi)



Saw Frames

A Mini Hack 35-600 \$3.50

Inexpensive yet handy little saw with sturdy steel frame and finger guard for cutting metal.

B Mini Hack 35-680 \$7.50

A must for any tool box. Well balanced, handy saw with black steel frame and plastic grip handle.

C Deluxe Junior Hack 35-650 \$10.50

This saw has a blade tensioning end screw for easy installation and tensioning. Cuts wood, plastic and metal. Comfortable plastic molded handle. Comes with 32 tpi blade.

D Pocket Hack 35-660 \$9.50

Versatile saw with handle that adjusts to any angle along the frame for cutting into hard-to-reach places.

E Adjustable Jewelers 35-750 \$13.90

Uses scroll, fret or jewelers blades of any size. Frame adjusts to extend the life of broken blades. Cuts all types of metal and plastic. Steel frame with chrome finish.

F Coping 35-670 \$9.90

Flat wire frame for tensioning standard pin end coping saw blades. Precise cuts in wood, plastic and metal.

Part No.	Price/Qty	Blade Specifications	Application/Universal No.
Mini/Junior Hack Saw Blades (6" long 5 3/4" between pins)			
36-656	\$2.25/3pk	.250" x .015" x 15 tpi	For hard/soft wood
36-657	2.25/3pk	.250" x .015" x 32 tpi	For metal and plastic 3/32" + thick
36-658	4.10/3pk	.250" x .015" x 52 tpi	For very thin sheet metal
36-668	4.50/1pk	Tungsten Carbide Grit	For cutting hard, abrasive materials
Jewelers Saw Blades			
36-475	\$3.90/12pk	.019" x .0095" x 61 tpi	Universal No. 3/0
36-476		.020" x .010" x 56 tpi	Universal No. 2/0
36-478		.022" x .011" x 51 tpi	Universal No. 0
36-479		.024" x .012" x 48 tpi	Universal No. 1
36-480		.028" x .013" x 43 tpi	Universal No. 2
36-481		.030" x .014" x 41 tpi	Universal No. 3
36-482		.031" x .015" x 38 tpi	Universal No. 4
Coping Saw Blades (6 1/2" long between pins)			
36-676	\$1.60/4pk	.100" x .018" x 24 tpi	Fine finish
36-678	1.60/4pk	.125" x .020" x 15 tpi	General purpose
36-679	2.80/4pk	.250" x .014" x 32 tpi	Non-ferrous metal

Replacement
Blades

Tool Holders Pin Vises Bur Holders



37-120
Revolving Tool Holder \$7.90

Offers fingertip control by placing ball in palm of hand and using fingertips to guide and turn chuck. Includes 2 collets with capacity range of 1/64" to 3/32" diameter. For drills, taps and reamers.



37-160
Spiral Hand Drill \$8.75

Archimedean or spiral hand drill for use with small wire size drills (#70 to #80). Push ring down to turn drill. Spring return makes drilling fast and easy.



37-170
Small Pin Vise
\$5.90

37-180
Large Pin Vise
\$6.50

Steel pin vises for holding wire, rod, drills, taps, reamers, etc. Both can be used in a stationary drill press chuck as an adapter for small drills and taps.

37-170 Small Pin Vise has chuck capacity of .8 to 1.5mm (.03" to .06").

37-180 Large Pin Vise has chuck capacity of 1.3 to 3.1mm (.05" to .125").



37-130
Tool Holder
\$7.50

Includes 2 collets with capacity range of 1/64" to 3/32" diameter. Ideal for use with small tools including chisels, files, reamers, beading tools, burs and gravers.



37-200
Mini Vise \$22.50

Zinc die cast vise holds flat or round pieces for drilling or grinding. Horizontal "V" grooves hold rod and tubing. Jaw width— 1 3/8", Jaw capacity—1 1/2", Jaw height— 1/2". Mounting hardware included.



37-145
Double Ended Pin Vise \$6.70

Comes with 2 reversible steel chucks. Four chuck sizes for drills, miniature reamers, files and small tools

0"-.05"	.03"-.08"
.05"-.10"	.07"-.11"



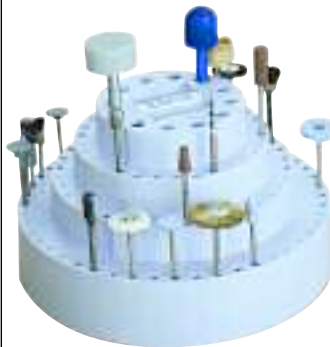
37-140
Swivel Head Pin Vise
\$7.50

Comes with two double-ended collets in the handle with 0" to .125" capacity range. Holds small tools with round shanks including drills, burs, reamers, taps, needles, scribers, etc. Revolving head makes drilling fast.



37-210
Mini Vise \$8.75

Lightweight plastic vise for craft or hobby projects. Good for jobs that require the use of water. Jaw width— 1 3/4", Jaw capacity— 1 5/8", Jaw height— 3/4".



37-860
Rotating Bur Holder \$14.95

Organizes 126 all size accessories including 1/16", 3/32" 1/8", and 1/4" shank accessories. Measures 7" wide x 4" high. Burs not included.



37-880
Round Bur Holder with Cover \$3.25

Stores 3/32" and 1/8" shank accessories. 24 holes for each size shank. Holds burs up to 2" long. 2 1/8" dia. x 2 1/2" high. Burs not included.



37-890
Square Bur Holder with Cover \$3.75

Stores 3/32" and 1/8" shank accessories. Holds burs up to 2" long. 2 1/2" sq. x 2 1/4" high. Burs not included.



37-865
Rotating Bur Holder with tool storage \$14.95

Organizes 114—3/32" accessories. Measures 7" wide x 7" high with a 2 3/4" center cup (3" deep) to hold small tools. Burs not included.

Pliers

Use Zona's pliers for assembly work in model making, jewelry and electronic applications. They have box joint construction for maximum strength and accuracy, perfectly aligned jaws and points and comfortable grips with spring openings.



37-341
Diagonal Cutting
\$9.25



37-342
Bent Nose
\$9.25



37-343
Round Nose
\$9.25



37-344
Flat Nose
\$9.25



37-541



37-546



37-542✓



37-547✓



37-543✓



37-548✓



37-544



37-549✓



37-545

Tweezers

Part No.	Description	Length	Price
37-541	Cross Locking	6¼"	\$5.50
37-542 ✓	Fine Point	4¼"	4.50
37-543 ✓	Flat Blade	4½"	4.50
37-544	Slide Locking	5¾"	5.50
37-545	Curved Point	6¼"	5.50
37-546	Sharp Point	4¾"	4.50
37-547 ✓	Slide Locking	4¾"	5.50
37-548 ✓	Curved Point	4½"	5.50
37-549 ✓	Cross Locking	4¾"	4.50
37-540	5 Pc. Tweezer Set		20.90



36-105
Precision Oiler
\$4.20

General purpose, light-weight, plastic compatible oil in a hypodermic dispenser is ideal for precision lubricating in hard to reach places.



37-150
High Speed Steel Twist Drill Set \$25.95

Plastic dispenser box holds a 20-piece drill set with one each high speed twist drills in wire gauge #61 to #80.

Nine styles of quality tweezers for handling small objects. Useful for hobbies, modeling, assembly, jewelry making & gluing projects. Available individually and in Set of 5 packed in heavy duty reusable plastic case. **Set selection marked with ✓**

37-540 Tweezer Set



Sand and Polish

37-790
3/4" Finger
Sander \$3.90



37-795
1 1/2" Finger
Sander \$5.00

Zona's spring-loaded finger sanders have a unique shape for preparing both curved and straight surfaces. The 3/4" and 1 1/2" width sanders come with 320 grit sandpaper.

A Master Set (37-794 \$13.20) that includes both sanders plus 8 additional sandpaper bands (2 ea. of 150 and 320 grit for both sanders) is also available.

Replacement bands in **Packs of 4** for the 3/4" Sander and **Packs of 3** for the 1 1/2" Sander in 150, 240 and 320 grit are shown below, as well as new Assortment Packs.

Replacement Bands for 37-790
\$3.90 per 4 pack
\$5.90 per 6 pack Assortment

37-791	150 grit
37-792	240 grit
37-793	320 grit
37-780	6Pc. Asst. with
NEW	2 ea. grit above

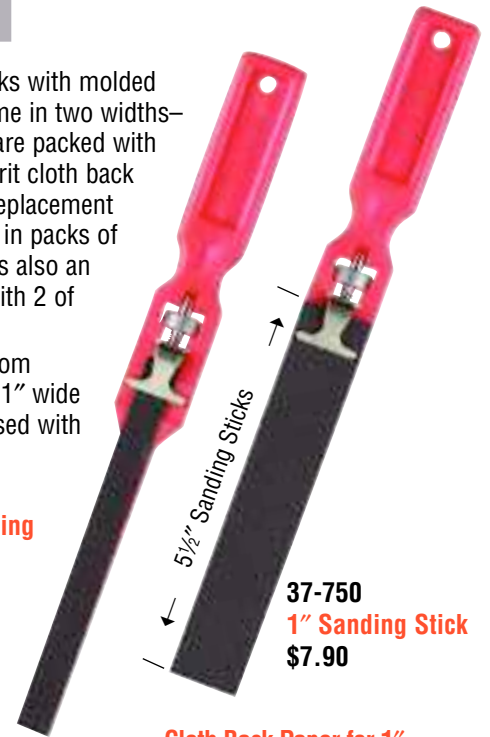
Replacement Bands for 37-795
\$3.90 per 3 pack
\$7.80 per 6 pack Assortment

37-796	150 grit
37-797	240 grit
37-798	320 grit
37-799	6Pc. Asst. with
NEW	2 ea. grit above

These sanding sticks with molded plastic handles come in two widths—1/2" and 1". Both are packed with an 11" long, 120 grit cloth back sandpaper strip. Replacement strips are available in packs of 10 per grit. There is also an assortment pack with 2 of each grit.

Emery paper cut from 9" x 11" sheets or 1" wide rolls can also be used with the sticks.

37-770
1/2" Sanding
Stick
\$7.90



37-750
1" Sanding Stick
\$7.90

Cloth Back Paper
for 1/2" Sanding Stick
\$4.20 per 10 pack

37-786	80 (coarse)
37-787	120 (medium)
37-788	180 (fine)
37-789	220 (extra fine)
37-785	400 (ultra fine)
37-782	Assortment Pack
	2 of each above

Cloth Back Paper for 1" Sanding Stick
\$4.50 per 10 pack

37-766	80 (coarse)
37-767	120 (medium)
37-768	180 (fine)
37-769	220 (extra fine)
37-765	400 (ultra fine)
37-762	Assortment Pack
	2 of each above

NEW



3M Micron
Graded Wet/Dry
Polishing Paper

3M's polishing papers have super flexible non-woven backings that allow for easy polishing of flat and contoured surfaces of softer materials including acrylic, polyurethane, solid surface

composites, fiberglass, aluminum, precious metals and wood with a uniform finish. Can be used with or without water. Working in sequence from the most coarse to the finest grade will bring the best results. Papers can be cut lengthwise into strips for use on Zona's Sanding Sticks, or taped and made into a roll for

use on our Finger Sanders. Comes in six micron grades from 1 (finest) to 30 (coarsest) microns in packs of 10 per grade. Sheets measure 8 1/2" x 11". Two assortment packs are available: A 6-pc set of full size sheets in each grade (37-948) and a 6-pc set of each grade in half size sheets measuring 4 1/4" x 11" (37-949).

Part No.	Description	Abrasive Material	Price
37-941	10 sheets of 1 micron, white	Aluminum Oxide	\$16.40
37-942	10 sheets of 2 micron, aqua	Aluminum Oxide	16.40
37-943	10 sheets of 3 micron, pink	Aluminum Oxide	16.40
37-944	10 sheets of 9 micron, light blue	Aluminum Oxide	16.40
37-945	10 sheets of 15 micron, gray	Silicon Carbide	16.40
37-946	10 sheets of 30 micron, green	Silicon Carbide	16.40
37-948	6-Pack Full Sheet Assort. with one of each grade listed above.	AO and SC	9.70
37-949	6-Pack Half-Sheet Assort. with one of each grade listed above.	AO and SC	4.90
37-959	Super Bond Film Tape 396, 1" x 36 yards		9.50

Clamps

Berna® Hobby Clamps

Hobby Clamps come in two sizes—small and large. The difference between the two is the length of the beam. Large clamps have 8" long beams and small have 3" beams.

Each Hobby Clamp consists of—

- a high density carbon fiber beam
- two polycarbonate jaws
- two flexible, heat resistant silicone rubber buffers
- two silicone rubber stops



38-720
Large Hobby Clamp
\$6.20 8" beam

38-710
Small Hobby Clamp
\$5.20
3" beam

Berna® Hobby Clamp Assortment



38-725
\$17.50



Includes three hobby size clamps—2 large and 1 small, connector strips for extending capacity of width and instructional brochure. Display packaged with \$20.55 Retail Value.

Hobby Clamp Components

Part No.	Description	Price Each
38-751	Strip of 12 Connectors	\$2.95
38-753	Rubber Stop (min. 12)	.15
38-754	Jaw Buffer (min. 12)	.50
38-755	3" Beam (min. 6)	1.30
38-756	8" Beam (min. 6)	2.75
38-757	3" Jaw (min. 6)	1.25



Berna clamps are great for assembly projects and for use on fragile items.

C-Clamps



37-215
Small C-Clamp \$2.50
5/8" maximum opening.

37-220
Large C-Clamp \$2.75
1½" maximum opening

These value priced, plastic clamps are lightweight, simple to use and come in two sizes—small and large. Model-builders and miniaturists will want several sets of these on hand.

Set with one of each size is also available (37-230 \$4.50)

Soff Jaws™



37-375
Vinyl Acetate Soff Jaws
\$7.95

37-376
Leather Soff Jaws
\$7.95

Soff jaw bench vise pads attach to any 3" or 4" vise with magnetic strips. They have cushioned pads made of vinyl acetate or leather that grip odd shapes and prevent marring of polished or painted surfaces and threaded parts.

Hammers

Swiss-style

Sturdy hardwood handles and quality steel heads make these mini hammers an excellent choice for small model, miniature, and hammering projects in wood, plastics and metal.

37-110 \$7.95

Mini Riveting Hammer with flat end for light duty work and chisel-shaped end for forming metal. Overall length-8 $\frac{1}{8}$ ".

37-109 \$7.95

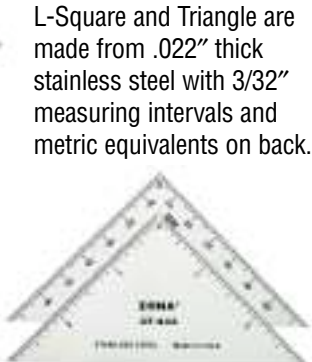
Mini Ball Peen Hammer for flattening, shaping and removing dents. Overall length-8 $\frac{1}{8}$ ".



Measure



37-434
3" x 4" L-Square \$6.95



37-433
3" Triangle \$6.95

L-Square and Triangle are made from .022" thick stainless steel with 3/32" measuring intervals and metric equivalents on back.

Shape



37-320
Spoke Shave \$5.95

One piece metal construction with adjustable blade. Use for rounding and shaping.

37-323 Spoke Shave Replacement Blades
\$3.10 per 2 pack



37-313 Block Plane Replacement Blades \$2.95 per 2 pack
These blades are for use with the Zona's discontinued 37-310 Block Plane.

Knives

Hobby-style



39-910 Soft Grip Knife with No. 11 blade in handle \$4.50
39-920 Soft Grip Knife Set with 5 hobby blades \$5.95

Light-duty knife with anti-roll design & soft grip handle for extra comfort and control. Rear blade release holds blades securely and safety cap covers and protects blades. The 39-910 Soft Grip Knife comes with a No. 11 blade in handle. **The 39-920 set has the knife with No. 11 blade in handle and four additional blades—Nos. 10, 11, 16 and 33 shown below.**

Replacement Hobby Blades

39-921 No. 11 \$2.25 Pack of 5
39-929 No. 11 \$26.40 Bulk Pack (100)



Hobby-style



39-850 Retractable Knife Set with 6 hobby blades \$4.95

This knife is made from durable high-impact polycarbonate plastic. Its retracting feature makes it easier for one-handed operation and safer to carry. **39-850 Set consists of the Retractable Knife with No. 11 blade in the handle & five additional No. 11 hobby blades in plastic tube.**

39-922 No. 16 \$2.25 Pack of 5



39-923 No. 10 \$2.50 Pack of 5



39-924 No. 13 Micro Saw (42 tpi) \$2.35 Pack of 5



39-925 No. 33 Micro Saw (32 tpi) \$2.75 Pack of 5



Replacement Surgical Style Blades

39-872 No. 10A \$2.30 Pack of 3



39-873 No. 10 \$2.30 Pack of 3



39-874 No. 15A \$2.30 Pack of 3



Surgical-style



39-800 Retractable Razor Knife Set with 4 surgical quality blades \$7.50

This knife is made from durable high-impact polycarbonate plastic. Its retracting feature makes it easier for one-handed operation and safer to carry. **39-800 Set consists of the Retractable Knife with No. 10A blade in the handle and three additional blades—one each of Nos. 10A, 10, and 15. Blades are made from high quality surgical stainless steel that are ultra-sharp, rust proof and long lasting.**

Our new catalog features one of the largest HO scale model railroad layouts in New England. Built and operated by the Silk City Model RR Club, the 120' x 50' layout boasts a horseshoe curve and 1000' mainline. It is located in the impressive Time Machine Hobby Store of Manchester, CT. We want to thank both the store and club for allowing us to take and publish these photographs.

Index

	Page
Razor Saws	2-3
Saw Sets and Replacement Blades	4
Miter Boxes and Sets	5
Saw Frames and Blades	6
Tool Holders, Pin Vises, Hand Drills, Mini Vises, and Bur Holders	7
Pliers, Tweezers, Oiler, Twist Drills	8
Sanding Sticks and Finger Sanders, 3M Micron Graded Wet/Dry Paper	9
Berna® Hobby Clamps, C-Clamps and Soff Jaw Bench Vise Pads	10
Hammers, Measuring Tools, Spoke Shave and Knives	11

Note to our Dealers:

High resolution, 300 dpi images of the products shown in this catalog are available for download from a password protected website: zona.phanfare.com

Please call customer service for the password.

ZONA®
Zona Tool Company
www.zonatool.com

16 Stony Hill Road, Bethel, CT 06801 USA

Phone: 800-696-3480 or 203-792-8622

Fax: 800-299-4208 or 203-796-7861

All prices are subject to change without notice.

